

CLIMATE EMERGENCY RESPONSE PLAN



CLIMATE EMERGENCY RESPONSE PLAN PART 1: COUNCIL SERVICES

INCREASING RESILIENCE TO CLIMATE CHANGE

Action	Timescale	Involves	Cost and funding
1 UPDATED: Use the Climate Just framework to work with people identified as being vulnerable, as well as with the community and voluntary sector and places such as care homes and hospitals to build knowledge and action when there is a risk of heat waves, excess cold or flooding.	2022/23 (delayed due to COVID-19).	NHS Clinical Commissioning Group, voluntary and community services. Sutton Council - Public Health, Communications, Social Services and Emergency Planning.	Unknown at present.
2 EXISTING: Continue to progress detailed designs and establish the financial feasibility for flood alleviation schemes in the four priority areas: Beddington Gardens, Worcester Park, Wallington Station and South Beddington.	Ongoing	Sutton Council, Environment Agency, South East Rivers Trust, local residents and local businesses.	Some funding is provided by the Environment Agency for scheme development and schemes will be eligible for funding from the Environment Agency if they meet criteria. Other costs are met from existing council budgets.
3 UPDATED: Deliver the 'SuDS' in Sutton Schools' project, which will introduce natural drainage features to reduce flood risk in playgrounds as well as the local area. The project will provide educational resources for learning.	2022/23 - work has been delayed due to COVID-19.	Sutton Council, schools, suppliers, South East Rivers Trust and Environment Agency.	Estimated total cost is £1.7m, predominantly externally funded. The Council has committed £500K towards the project.
4 UPDATED: Work with the voluntary sector to build community resilience in addressing climate change and tackle inequality e.g. ward coordinators, Local Committees.	From 2022/23.	Individuals, communities, charities and voluntary groups, Sutton Council.	Not known at present, not necessarily any cost.
5 EXISTING: Support the delivery of the River Wandle and Beverly Brook Catchment Plans to achieve Water Framework Directive targets.	Ongoing	South East Rivers Trust, Sutton Council, SES Water and Environment Agency.	There are a variety of projects with associated costs. This strategy doesn't provide any additional funding.
6 EXISTING: Work with the GLA and Public Health England on emergency planning for heatwaves. Response mechanisms will include 'cool' spaces in public buildings and assets.	Ongoing	Sutton Council - Emergency Planning, Climate Action & Sustainability and Asset Management.	Met from existing budgets.
7 NEW: Raise awareness of Met Office severe weather alerts, supporting residents, schools and businesses to sign up to alerts to be directly informed when severe weather events are anticipated and take action to plan accordingly.	Ongoing	Sutton Council - Sutton Flooding Preparedness group, supported by Emergency Planning and Communications.	Met from existing budgets.
8 EXISTING: Continue to work with other London boroughs, the GLA and London Councils on lobbying, partnerships and projects that address environmental challenges.	Ongoing	Sutton Council - Climate Action & Sustainability.	Met from existing budgets.

1. Sustainable drainage (SuDS) helps reduce the impacts of heavy rain, by slowing down the flow of water before it overwhelms the drainage network. Examples include rain gardens, drainage ponds and green roofs.

ENCOURAGE INDIVIDUAL ACTION ON THE CLIMATE EMERGENCY

	Action	Timescale	Involves	Cost and funding
1	EXISTING: Raise awareness of the climate emergency and encourage behaviour change e.g. paving over gardens, fast fashion, reuse, water reduction, food waste, cycling and walking.	Ongoing	Sutton Council - Climate Action & Sustainability and Communications. Residents, partners, community groups and businesses.	From existing budgets. We will apply for funding where this would support or increase our environmental work or communications.
2	UPDATED: Maintain information on the Council’s website about the actions people, businesses, landlords and organisations can take on climate change, with links to guidance and expertise.	Ongoing	Sutton Council - Climate Action & Sustainability.	Met from existing budgets.
3	NEW: Work with schools, charities, environmental groups, businesses, business groups and interested partners to raise awareness and support action. Explore ways to celebrate and recognise action.	Ongoing	Sutton Council - Climate Action & Sustainability and communications. Any interested partners.	Additional officer is required to undertake this in a meaningful and consistent way.
4	NEW: Work with London Councils, the GLA and other London boroughs to develop the case for legislative and regulatory change, investment and leadership needed at national level to respond to the climate emergency.	Ongoing	Sutton Council - Climate Action & Sustainability.	Met from existing budgets.

TREES, PARKS AND BIODIVERSITY

	Action	Timescale	Involves	Cost and funding
1	EXISTING: Implement the Parks and Open Spaces Strategy. This is a major programme of business as usual activities, re-engineering processes and methods of parks maintenance, and projects.	5 year programme of works from 2020 - 2025.	Sutton Council, Parks for London, friends groups, other volunteers including Sutton Nature Conservation Volunteers, tree wardens and local residents, the Conservation and Access Management Committee, South East Rivers Trust and idVerde.	5 year programme of works, some of which is fully funded, some is partly funded and some will depend on successfully bidding for external funding.
2	EXISTING: Prepare and review parks management plans, starting with the major parks.	Ongoing	Sutton Council - Parks team including the Tree Officers and Biodiversity Officers.	Met from existing budgets.
3	UPDATED: Using Local Plan data, work with local people to create green spaces and plant trees where there is a deficit.	Ongoing	Sutton Council - Parks, Local Committees. Residents, community groups and Wandle Valley Regional Park Trust.	Some funding has been secured to support this work. Further funding will be required to maintain delivery beyond 2021/22. Funding for physical works could come from public realm funding or bids to Greener City Fund (GLA) and equivalents.

	Action	Timescale	Involves	Cost and funding
4	UPDATED: Support the creation by the community of pocket parks, community gardens, food growing, and the 'meanwhile use' of spaces.	Ongoing	Residents, businesses, community groups, Sutton Housing Partnership, housing associations. Sutton Council - Parks, Planning and Parking Services.	External Funding is needed to support delivery of this action. Community groups can apply for public realm funding through Local Committees, or grants such as the Greener City Fund (GLA). Ongoing costs for maintenance need to be considered at the point of application together with who is responsible for ongoing maintenance.
5	EXISTING: Deliver the Biodiversity Strategy.	2020 - 2025	Sutton Council - Biodiversity and Parks. Sutton Nature Conservation Volunteers, idVerde, South East Rivers Trust and various third parties.	Some projects can access agri-environment funding but others (e.g. river restoration) require funding applications. Funding may be available through the biodiversity net gain planning policy.
6	EXISTING: Monitor and advise on the creation of new wildlife habitat through the restoration of Beddington Farmlands.	Ongoing to December 2023.	Viridor, supported by Sutton Council - Planning and Biodiversity.	Viridor is funding the restoration as part of its planning condition for the Energy Recovery Facility.
7	EXISTING: Provide biodiversity education to 5,000 people each year (3,500 school aged children).	Ongoing	Sutton Council - Biodiversity and Communications.	These events are self-financing.
8	COMPLETED: Publish a list of trees good for biodiversity and a range of locations, to guide developers and residents when planting trees.	2020/21	Sutton Council - Climate Action & Sustainability, Biodiversity, Trees and Planning.	Met from existing budgets.
9	NEW: Maintain a list of trees good for biodiversity and a range of locations, to guide developers and residents when planting trees.	Ongoing	Sutton Council - Climate action & Sustainability, Biodiversity, Trees and Planning.	Met from existing budgets.
10	EXISTING: Plant 2,000 trees each year.	Ongoing	Sutton Council - Trees, Planning and Local Committees. Developers and community groups.	Tree planting is dependent on the allocation of funding from Local Committees, other Council budgets and external funding bids as the parks team does not have a budget allocation for purchasing trees.
11	EXISTING: Support community groups who want to plant trees - help with bidding, give advice and organise planting events.	Ongoing	Community groups and volunteer centre. Sutton Council - volunteering, Trees, Local Committees.	Providing support is met from existing budgets. Free trees are offered throughout the year by various organisations.
12	EXISTING: Promote gardening for wildlife and biodiversity as part of the annual 'Sutton in Bloom' competition.	Each summer.	Sutton Council - Parks and Communications.	Met from existing budgets.

AIR QUALITY

The Council has a separate, statutory, action plan for air quality improvement. This can be viewed here: [Air Quality Action Plan](#). The current plan runs from 2019 to 2023 and an Annual Status Report is produced and submitted to the GLA each year in May and then published on the Council’s website.

Key areas of action include:

- ▶ Cleaner transport: road transport is the main source of air pollution in Sutton. We need to incentivise a change to walking, cycling, low emission public transport and ultra-low emission vehicles (such as electric) as far as possible.
- ▶ Delivery servicing and freight: vehicles delivering goods and services are usually light goods vehicles or heavy goods vehicles. These are mainly fuelled by diesel which contribute to higher nitrogen dioxide and particulate concentrations.
- ▶ Borough fleet actions: The borough needs to lead by example. However, the borough only has a small fleet of vehicles, including light goods and mini buses/coaches but can adopt procurement policies that seek to ensure those contractors delivering services on behalf of the Council meet higher emissions standards.
- ▶ Emissions from developments and buildings: emissions from buildings account for about 15% of the nitrogen oxide emissions across London so are important in affecting nitrogen dioxide concentrations.
- ▶ Public health and awareness raising: increasing awareness can drive behavioural change to lower emissions as well as to reduce exposure to air pollution.
- ▶ Localised solutions: these seek to improve the environment of neighbourhoods through a combination of measures.
- ▶ Monitoring and other core statutory duties: Monitoring is critical to understanding and addressing the problem. Borough monitoring networks are essential to this. They also inform and validate all modelling for London.

WALKING, CYCLING AND PUBLIC TRANSPORT USE

[See also the Air Quality Action Plan.](#)

Action		Timescale	Involves	Cost and funding
1	UPDATED: Publish a new Sustainable Transport Strategy (STS), enabling an increase in walking and cycling across the borough.	Following a public consultation in January to March 2021, the updated draft STS is scheduled to be considered for adoption by the Environment and Sustainable Transport Committee in October 2021.	Sutton Council - Strategic Planning, Highways & Transport and Climate Action & Sustainability. Cyclists, walkers, drivers and developers.	Existing Council budgets, including TfL Local Implementation Plan and Cycleway funding. The Ashden / Friends of the Earth toolkit proposes spend of £50/person/year on walking and cycling. This equates to £10.3m. The Council has historically received around £1.5m each year from TfL and other sources (e.g. Section 106). A significant increase in funding from TfL would be needed and TfL’s overall funding situation due to COVID-19 makes this significantly more uncertain.

	Action	Timescale	Involves	Cost and funding
2	UPDATED: Lobby for improvements to the frequency and coverage of bus services in the borough, including demand-responsive services.	Ongoing	Sutton Council - Strategic Transport Planning and Highways & Transport. Transport for London and Public Transport Liaison Group.	The TfL Sutton Bus Review is an ongoing process. In late 2020 TfL carried out a public consultation on a number of changes to routes in Sutton and Croydon, including options for additional services to serve Belmont/London Cancer Hub and the new acute services hospital scheduled to open in 2025, as well as improvements to other routes as demand increases. The final report is due to be published in early September 2021, and the majority of changes will come into effect from late 2022 as route contracts come up for renewal.
3	NEW: Lobby for improvements in facilities to support walking and cycling on the Transport for London Road Network.	Ongoing	Sutton Council - Highways & Transport.	Staff time on lobbying can be met from existing budgets. Improvements are needed across the whole borough, however the current focus is on the Carshalton High Street area where TfL are currently developing improvement plans for the area.
4	UPDATED: Lobby for the bus fleet in Sutton to be electric earlier than 2037 as currently planned.	Ongoing	Sutton Council - Strategic Transport Planning and Highways & Transport. Transport for London.	Staff time on lobbying can be met from existing budgets. A significant increase in funding from TfL would be needed to achieve this acceleration and TfL's overall funding situation due to Covid-19 makes this significantly more uncertain. Currently all buses operating in Sutton meet the Euro VI emissions standard.
5	EXISTING: Lobby for improvements to rail services in the borough including metroisation, meaning a more frequent service.	Ongoing	Sutton Council - Strategic Transport Planning and Highways & Transport. Transport for London, Public Transport Liaison Group, Govia Thameslink and passenger groups.	TfL's strategic business case for metroisation in South London estimated the whole scheme will cost £1.6bn. Network Rail and TfL are also looking to progress elements separately. The Council has submitted a bid to the Government's Levelling Up Fund for one element, the £32 million Belmont Twin Track Reinstatement Scheme to serve the London Cancer Hub and new Specialist Emergency Care hospital. The wider metroisation proposals, including turnbacks at Wallington and Cheam, are supported by the Council in the new Sustainable Transport Strategy and Local Implementation Plan.

	Action	Timescale	Involves	Cost and funding
6	EXISTING: Secure funding for cycle network improvements e.g. new quiet routes, segregated cycle paths, cycle parking etc.	Ongoing	Sutton Council - Highways & Transport.	Transport for London fund Cycleways. The council is developing projects to be considered as part of the next three year LIP spending plan, which will include cycling schemes. Council officers continue to work with Get Sutton Cycling to identify opportunities for new routes. The Council can use Section 106 (S106) and Community Infrastructure Levy (CIL) funding secured through planning.
7	EXISTING: Provide cycle maintenance and cycle safety training and workshops.	Ongoing	Sutton Council - Sustainable Transport.	Funded through the Local Implementation Plan allocation from Transport for London with associated targets. This funding has been severely restricted due to COVID-19.
8	COMPLETE: Secure funding for transformational changes to create low-traffic neighbourhoods.	Completed February/ March 2021.	Sutton Council - Highways & Transport.	The council secured funding from DfT and TfL to deliver this work as part of the COVID-19 emergency response. Additional funding is needed to support Play Streets.
9	UPDATED: Implement a programme of School Streets and Play Streets, working with residents and schools.	From Autumn 2021/22.	Sutton Council - Highways & Transport.	Residents can bid for an event fees and charges grant to support the costs of road closures for events they want to hold.
10	NEW: Undertake 'Neighbourhood Place Shaping' consultation with residents regarding the 'Safer and Healthier Streets' programme, developing and co-designing potential schemes as appropriate.	Ongoing	Sutton Council - Highways & Transport.	Two key areas at Worcester Park and Butter Hill have been identified for reconsultation using more formal processes, with consultations planned to start in October 2021 and run through to November/December 2021.
11	EXISTING: Continue to work with dockless e-bike suppliers and introduce a new e-bike hire service in the borough.	Ongoing	Sutton Council - Highways & Transport.	Met from existing budgets.

STREETS AND PUBLIC SPACES

	Action	Timescale	Involves	Cost and funding
1	UPDATED: Complete the street lamp column and LED roll out by 2025. Around 54% of the stock has been converted to date.	Ongoing	Sutton Council - Street Lighting.	Currently funded on an annual basis from council capital budgets. Acceleration will require additional funding.
2	NEW: Replace all existing concrete street lamp column stock to enable LED lighting and suitability for future EV charging options.	Funding application underway, delivery will take 2 years.	Sutton Council - Street Lighting.	Some funding is available via the Go Ultra Low City Scheme (GULCS), however additional funding will be required. Total cost is estimated to be £10.5m. Funding bids are currently being developed.
3	NEW: Deliver and monitor the Parking Strategy to identify any displacement activities and reduction in traffic.	Ongoing	Sutton Council - Highways & Transport and Parking Services.	Met from existing budgets.
4	NEW: Work with other local authorities and industry experts to identify opportunities to reduce the carbon intensity of road resurfacing materials.	As opportunities and technology allow.	Sutton Council - Highways & Transport.	Detailed business case required.
5	UPDATED: Include sustainable drainage in every road improvement scheme and assess the feasibility of switching to 100% permeable surfacing materials.	As part of planned programme works.	Sutton Council - Highways & Transport. Residents and road users.	There may be additional costs to include sustainable drainage and for ongoing maintenance. These costs need to be included in scheme financial considerations at the start.

PLANNING

	Action	Timescale	Involves	Cost and funding
1	UPDATED: Implement Local Plan Policies 26c (Biodiversity) and 33b (Climate Change Adaptation) ² in line with the Council's Technical Guidance Note on 'Building a Sustainable Sutton' (June 2018). Compliance of major developments with the relevant green space factor (GSF) and biodiversity accounting targets is reported annually in Sutton's Authority Monitoring Report (AMR).	Ongoing	Sutton Council - Planning, Parks and Biodiversity. Developers.	Met from existing budgets.

2. [Local Plan, 2018](#) Policy 26 is found on page 91 and Policy 33 on page 114.

Action		Timescale	Involves	Cost and funding
2	<p>EXISTING: Maximise opportunities to exceed Local Plan requirements for increasing overall green space coverage and improving the Green Space Factor score by including green space, habitats, landscaping, planting, trees and sustainable drainage retrofit etc:</p> <ul style="list-style-type: none">▶ in private developments, through the planning process;▶ as part of major investments e.g. Sutton Town Centre, estate regeneration projects;▶ in estate renewal projects and council housing schemes;▶ in transport / Local Implementation Plan schemes;▶ in relevant Business Improvement District projects;▶ in flooding schemes;▶ in other council-led schemes e.g. schools;▶ and in the Public Realm Design Guide. <p>Report through the Authority Monitoring Report.</p>	Ongoing	<p>Sutton Council - Planning, Biodiversity, Flood Risk Management, Economic Development and Asset Management.</p> <p>Voluntary and community groups, Business Improvement Districts, Transport for London, South East Rivers Trust and Wandle Valley Regional Park Trust.</p>	<p>Greening and sustainable drainage measures should be included as part of the cost of the development / scheme.</p> <p>In some situations, public realm funding could be used for schemes that residents want to implement.</p>
3	<p>EXISTING: Ensure that all residential developments achieve 'zero carbon' standards (Local Plan Policy 31) or collect carbon offset payments.</p>	Ongoing	<p>Sutton Council - Planning.</p> <p>Developers.</p>	<p>Zero carbon measures should be included in the cost of the development / scheme.</p>
4	<p>EXISTING: At the next Local Plan update in 2023, strengthen zero carbon and other environmental policies, if permitted by national government.</p>	<p>Prepare from 2021 with the aim of adoption by 2023.</p>	<p>Sutton Council - Planning, Climate Action & Sustainability, Parks, Biodiversity, Trees, Flood Risk Management and Sustainable Transport.</p>	<p>Additional funding required (approximately £200k) for the updating of the Local Plan.</p>
5	<p>EXISTING: Deliver the Local Plan Policy 25b (open spaces)³ on allotments and promote allotment plot availability.</p>	Ongoing	<p>Sutton Food Forum, community groups and idVerde.</p> <p>Sutton Council - Parks.</p>	<p>Met from existing council budgets.</p>
6	<p>NEW: Prepare for mandatory implementation and monitoring of Biodiversity Net Gain in 2023.</p>	2023	<p>Sutton Council - Planning and Biodiversity.</p>	<p>Additional officer(s) required to deliver.</p>

3. [Local Plan, 2018 Policy 25](#) is found on page 88.

FUEL POVERTY

Action	Timescale	Involves	Cost and funding	
1	UPDATED: Deliver ‘Sutton Healthy Homes’, a borough wide home energy advice service to support residents to increase the energy efficiency of their homes. The scheme will prioritise support for vulnerable residents and those either at risk of or living in fuel poverty, helping them to access grants and information to reduce their fuel bills and improve the thermal efficiency of their homes.	2021/22 - 2022/23	Sutton Council - Climate Action & Sustainability, Public Health, Housing and Regulatory Services. Sutton Housing Partnership and Thinking Works.	Met from existing budgets.
2	NEW: Implement actions identified through monitoring of the ‘Sutton Healthy Homes’ service and from best practice elsewhere, to tackle fuel poverty in Sutton within the framework of Sustainable Warmth and the Fuel Poverty Action Plan for London.	Ongoing	Sutton Council - Regulatory Services, Housing Strategy and Climate Action & Sustainability. Sutton Housing Partnership, voluntary and community services.	Additional funding will be needed to deliver support across the whole borough. This action is likely to be impacted by the government’s forthcoming ‘Heat and Buildings Strategy’.

SUTTON HOUSING PARTNERSHIP

Action	Timescale	Involves	Cost and funding	
1	EXISTING: Develop plans for low-carbon alternatives to individual gas boilers in new and existing homes.	2020 -2022	Sutton Housing Partnership, Residents. Sutton Council - Housing Enabling and Housing Strategy.	Funded through the Housing Revenue Account (HRA).
2	COMPLETE: Undertake a stock condition survey to further inform plans for energy efficiency and retrofit.	2020/21	Sutton Housing Partnership.	£500k allocated within the 2020/21 HRA capital programme.
3	EXISTING: Improve the SAP (Standard Assessment Procedure) rating of the housing stock by delivering energy efficiency improvements planned as part of the Housing Revenue Account (HRA) capital programme. These include major repairs, improvements to council stock and redevelopment of estates.	The current HRA Business Plan covers the period 2020/21 to 2049/50.	Sutton Housing Partnership, residents. Sutton Council - Housing Estate Regeneration.	Projected expenditure is set out in the HRA Business Plan.
4	UPDATED: Retrofit 5 council properties as part of the Energiesprong retrofit pilot.	On site works scheduled to complete by August 2021.	Sutton Housing Partnership and residents. Sutton Council - Housing Strategy.	£8m in total. £4.3m from the Housing Revenue Account; remaining funding from GLA, BEIS and eco3i.
5	UPDATED: Retrofit a further 75 council properties as part of the Energiesprong project.	June 2022	Sutton Housing Partnership and residents. Sutton Council - Housing Strategy.	Ashden / Friends of the Earth toolkit suggests a carbon reduction of 275 tonnes CO ₂ .

	Action	Timescale	Involves	Cost and funding
6	NEW: Assess the feasibility for retrofit of the next 1,800 council properties already identified as potentially suitable and develop a business case.	2022/23	Sutton Housing Partnership.	Between £20k and £100k per property, so an estimated £130m - £650m. This will require funding from the government. Ashden / Friends of the Earth toolkit estimates this could save 17,875 tonnes of CO ₂ .
7	NEW: Develop plans to retrofit the remaining council properties to zero carbon standard (6,600 properties in total) through feasibility studies and development of a business case.	2020 - 2030, approx 600 units per year.	Sutton Housing Partnership.	

NEW-BUILD COUNCIL HOUSING AND ESTATE REGENERATION

	Action	Timescale	Involves	Cost and funding
1	EXISTING: Seek to secure the budgets to enable all new-build council homes and estate regeneration projects led by the Council to be built or retrofitted to a zero carbon standard.	Ongoing	Sutton Council - Planning, Housing Regeneration, Housing Enabling, Housing Strategy and Asset Management.	Ashden / Friends of the Earth toolkit estimates an increased cost of 7%. This will require changes to the allocation of government funding for new build housing for local authorities and housing associations.

REDUCING WASTE, ENCOURAGING REUSE AND INCREASING RECYCLING

	Action	Timescale	Involves	Cost and funding
1	<p>EXISTING: Implement the waste minimisation strategy and reduction and recycling plan.</p> <p>Key areas of action include:</p> <ul style="list-style-type: none"> ▶ Reduce waste ▶ Maximise recycling ▶ Reduce the environmental impact of waste ▶ Maximise the use of local waste sites ▶ Be innovative ▶ Lead by example with our own waste. 	Ongoing, RRP is due to be reviewed in 2023.	Sutton Council, South London Waste Partnership, Veolia, Viridor, residents and businesses.	Capital funding allocation of circa £150k. Associated project costs to be identified. Some elements can be funded through CIL and S106.

	Action	Timescale	Involves	Cost and funding
2	UPDATED: Work with partners, businesses and interested organisations on projects that implement circular economy principles and demonstrate the potential of the approach.	From 2021/2022.	Sutton Council, Advance London, businesses, Business Improvement Districts, Sutton Housing Partnership, housing associations, voluntary and community organisations and South London Waste Partnership.	Costs to be determined based on feasibility of projects. May be opportunities to apply for funding or use CIL or S106.
3	UPDATED: Maintain the map and promotion of reuse and upcycling shops, schemes and projects in the borough.	2020/21, then ongoing promotion.	Community and voluntary sector, businesses, Sutton Council, funders.	Met from existing budgets.
4	EXISTING: Promote 'Refill Sutton' where local businesses and organisations refill water bottles for free and sign up more businesses, year on year.	Ongoing	Sutton Council - Climate Action & Sustainability. Businesses and Refill London.	Met from existing budgets.
5	EXISTING: Work with the GLA and SES Water to install drinking fountains in outdoor high-footfall locations in the borough.	Ongoing	Sutton Council - Climate Action & Sustainability. GLA, SES Water.	GLA is funding the fountains; funding required for ongoing cleaning and maintenance.
6	COMPLETED: Explore the feasibility of establishing a 'library of things' borrowing service (or equivalent) for little-used items such as lawn mowers and sewing machines. This could be at one or multiple locations in the boroughs.	2020/21	Sutton Council, community groups, external provider.	£30k setup costs per site. May be possible to fund using CIL.
7	NEW: Implement a library of things borrowing service for little-used items such as lawn mowers and sewing machines.	2021/22	Sutton Council - Climate Action & Sustainability.	£30k set up costs, funded via My Neighbourhood Fund (NCIL).
8	UPDATED: Recommission the textile banks service.	2021/22	Lewisham-led consortium, Sutton Council - Climate Action & Sustainability and Waste Disposal, suppliers.	Met from existing budgets.
9	UPDATED: Work with organisations and residents to expand recycling options across the borough for materials that cannot be collected in kerbside recycling (e.g. crisp packets, coffee cups etc.).	Ongoing	Sutton Council, external providers, residents and businesses.	Costs unknown at present but anticipate meeting through existing budgets.
10	UPDATED: Undertake a waste composition analysis, to guide communications about increasing recycling and reducing contamination.	2021/22	Sutton Council - Climate Action & Sustainability, Waste Disposal and Neighbourhood Services. Veolia, Viridor and supplier(s).	Approximately £20k, met from existing council budgets.
11	EXISTING: Continue to maximise the number of materials collected for recycling, at the doorstep and at the recycling centre.	Ongoing	Sutton Council, South London Waste Partnership, Veolia, Viridor, and other suppliers.	Met from existing budgets.

Action		Timescale	Involves	Cost and funding
12	NEW: As waste processing technology changes, identify new options to recycle more materials that are currently thrown away as rubbish, and target zero waste.	Ongoing	Sutton Council, South London Waste Partnership, Veolia, Viridor and other suppliers.	New services / disposal options may come at additional cost or be a saving. Detailed business cases would be developed on a case by case basis.
13	EXISTING: Work with Veolia, Viridor and other suppliers to develop plans to trial and then transition to a fully electric vehicle waste fleet.	As funding and technology allows.	South London Waste Partnership, Veolia, Viridor and other suppliers.	A detailed business case will be required, looking at the whole life costs of the vehicles and the appropriate timescales for phasing out vehicles as part of planned replacement schedules.

VOLUNTEERING

Action		Timescale	Involves	Cost and funding
1	UPDATED: Promote and enable environmental volunteering opportunities. 850 volunteer days are donated by Sutton Nature Conservation Volunteers each year.	Ongoing	Sutton Nature Conservation Volunteers, Sutton Volunteer Centre. Sutton Council - Biodiversity, Climate Action & Sustainability and Communications.	Met from existing budgets. There are various organisations in Sutton that offer environmental volunteering as well as council-led opportunities.
2	UPDATED: Create a network of community environment champions to encourage friends, neighbours and colleagues to take action on climate change.	2021/22 (delayed due to COVID-19 restrictions)	Sutton Council - Climate Action & Sustainability. Sutton Volunteer Centre.	Met from existing budgets.

PART 2: THE COUNCIL’S BUILDING ESTATE AND DIRECT OPERATIONS

ENERGY USE

Action	Timescale	Involves	Cost and funding
1 UPDATED: Develop and deliver a plan for installing renewable energy generation and insulation across the Council estate e.g solar panels, air source and ground source heat pumps.	2022/23 - development of action plan. Ongoing - implementation.	Sutton Council - Energy Management, Facilities Management and Asset Management.	Feasibility studies will determine costs. Interest free loans are available for the public sector through Salix Finance.
2 COMPLETED: Procure fully renewable electricity either through a Power Purchase Agreement or a REGO-backed supplier green tariff.	From April 2021, when the current energy contract ends.	Sutton Council - Energy Management.	Potential for 10% uplift in cost of energy.
3 NEW: Maintain the use of fully renewable electricity across 100% of the council estate. This will be procured either through a Power Purchase Agreement or a REGO-backed supplier green tariff.	Ongoing since April 2021.	Sutton Council - Energy Management.	Met from existing council budgets.
4 UPDATED: Explore options to introduce battery storage from the solar canopy and solar panels with electric vehicle charge points at the Council’s Civic Offices and Gibson Road car park in Sutton town centre.	Ongoing	Sutton Council - Energy Management, Asset Management and Parking Services.	Battery storage study showed this was not feasible due to capacity issues at Civic Offices. UK Power Networks have surveyed the site in summer 2021 and indicated a new sub station (circa £100-150K) is required. This will need to be located on site. Awaiting final report, however further funding will be needed for implementation.

THE COUNCIL’S BUILDINGS AND FLEET

Action	Timescale	Involves	Cost and funding
1 UPDATED: As appropriate opportunities come forward, replace council buildings with zero carbon or BREEAM Outstanding buildings, and identify retrofit measures for the remainder.	As appropriate.	Sutton Council - Asset Management and Major Projects & Programmes.	Costs not known at present. A business case would need to be developed.
2 EXISTING: When the Council refurbishes, consolidates or moves buildings, reuse as much office furniture, stationery and building fabric as possible, either elsewhere in the Council or by offering it to others, and apply the ‘circular office’ approach.	Ongoing as appropriate.	Sutton Council - Facilities Management. Mitie and ReLondon.	May be a cost to join reuse platforms, can be met from existing budgets.

	Action	Timescale	Involves	Cost and funding
3	UPDATED: Identify if there are cost-effective options to improve the Council's water efficiency in its buildings (e.g. toilets, taps).	Ongoing	ADSM (the Council's water provider). Sutton Council - Facilities Management and Asset Management.	Funded by AquaFund, operated by council water provider ADSM. Water efficiency technologies have been implemented throughout the corporate estate such as automated meter reading devices and urinal and water flow control devices being fitted. As new technology develops they will also be used.
4	UPDATED: Review water usage in services using high volumes of water e.g parks.	Ongoing	ADSM (the Council's water provider). Sutton Council - Facilities Management, Asset Management and Parks.	Funded by AquaFund, operated by council water provider ADSM. The top 10 sites have been identified and consumption analysis is being undertaken.
5	UPDATED: Produce a new travel plan strategy policy for council staff travel to and at work, including HR policies, travel allowances, the use of personal vehicles, pool and electric bikes, car clubs and public transport. Encourage partners to do the same.	2022/23 Delayed due to the changing nature of working patterns due to COVID-19.	Sutton Council - HR, Asset Management, Facilities Management, Climate Action & Sustainability, Highways & Transport, trade unions, staff networks and staff.	Strategy production can be met from existing budgets.
6	EXISTING: At the end of the current contract, switch as many as possible of the small fleet of council vehicles to electric and encourage partners to do the same.	2022/23	Sutton Council - Fleet Management, Asset Management, Facilities Management and Energy Management.	May be an increase in cost, which may be offset by an overall reduction in vehicles.
7	UPDATED: Understand the feasibility and costs of installing the electric charging infrastructure needed at Civic Offices to enable Mitie to switch to electric vans and to support the Council's switch at the end of the contract. On-street charging points delivered for residents and businesses are also important to support this.	Initial feasibility work highlighted issues around viability, work continues to explore other options with UKPN in 2021/22.	Sutton Council - Facilities Management, Energy Management and Asset Management.	Additional electricity capacity is likely to be required, which could be cost prohibitive. Develop a business case for this.
8	UPDATED: Work with the existing provider to switch the Mayor's vehicles to electric where possible and include in the specification when next procured.	2021/22 then when recommissioned.	Sutton Council - Committee Services.	Costs identified through tender process; may be an uplift.
9	COMPLETED: Publish an assets strategy that aligns council assets with delivery of the corporate plan, including the climate emergency and carbon reduction.	2020/21	Sutton Council - Asset Management.	Met from existing budgets.

Action	Timescale	Involves	Cost and funding
10 UPDATED: Undertake an investment grade audit of the Council's commercial building stock and physical assets in the corporate portfolio to identify the opportunities for retrofit to zero carbon and the likely costs. Include Sutton Housing Partnership residential properties in this audit.	2021/22 (delayed due to COVID-19).	Sutton Council - Asset Management, Facilities Management and Energy Management.	Cost of study determined by tender, may be possible to demonstrate invest to save approach.
11 UPDATED: Produce a technical construction guide setting out the environmental construction standards we are aiming for on council-led schemes and council-owned property, encompassing major works, general maintenance and repairs. Work with our contractors to learn from their experience.	2021/22 (delayed due to COVID-19).	Sutton Council - Climate Action & Sustainability, Asset Management, Facilities Management, Planning, Major Projects & Programmes and Estate Regeneration.	Additional funding required to commission this.
12 EXISTING: Highlight to commercial tenants opportunities to access funding for retrofit, boiler upgrades, energy efficiency measures etc. from government, Mayor of London etc.	Ongoing	Sutton Council - Climate Action & Sustainability and Asset Management.	Promotion of schemes / funding met from existing budgets.

DECISION MAKING AND PROCUREMENT

Action	Timescale	Involves	Cost and funding
1 UPDATED: All council committee papers will consider a sustainability impact analysis of the policy or decision being made.	2021/22	Sutton Council.	No cost.
2 UPDATED: Reduce as much as possible paper copies supplied for committee meetings: <ul style="list-style-type: none"> ► Concise reports. ► Members encouraged to go paperless. ► Paper copies will be provided to members for complex reports. 	Ongoing	Sutton Council - committee services and elected councillors.	No cost.
3 UPDATED: Finalise Sutton Council's sustainable procurement guide to focus on circular economy and achieving zero carbon goals, and provide training for staff. This includes how to secure environmental Improvements through Added Social Value and the environmental expectations we have of our contractors.	2020/21	Sutton Council and suppliers.	Met from existing budgets.

	Action	Timescale	Involves	Cost and funding
4	EXISTING: Build circular economy, zero carbon and sustainability principles into all new council-let contracts and seek to influence those let on our behalf by others.	Ongoing	Sutton Council and suppliers.	Met from existing budgets.
5	EXISTING: Review existing contracts and implement circular economy principles, zero carbon and sustainability in those with the most potential for this.	2020/21 to 2021/22.	Sutton Council and suppliers.	This requires an additional officer to progress.
6	EXISTING: Extend sustainable catering commitments to the meals on wheels contract and other food outlets the Council lets contracts for e.g. library and parks cafes. This will form part of the contracts review in action 5 above.	2021/22 onwards.	Sutton Council, providers, residents who use these services and Sutton Food Forum.	Contract changes are the best time to incorporate this. There is likely to be an increase in cost.
7	EXISTING: Review existing policies for potential conflicts with zero carbon and sustainability commitments, and identify options to address this.	As and when potential conflicts are identified.	Sutton Council.	Undertaking this on an ad hoc basis means this can be met from existing resources. A wholesale review is not possible without additional resources.

PENSIONS AND FINANCIAL INVESTMENTS

	Action	Timescale	Involves	Cost and funding
1	EXISTING: Use the pension fund’s policy on Responsible Investment and its membership of local, national and international investor forums to drive company improvements on sustainability and governance, and support the transition to a lower carbon economy through investment selection.	The Pensions Committee adopted a new Responsible Investment policy in June 2020. The pensions committee is required to review its investments every 3 years.	Sutton Council pension fund and investment managers, pension scheme members and employers.	Additional costs of implementing Responsible Investment policy to be borne by the Pension Fund.
2	EXISTING: Explore the use of innovative green financial instruments, low or no-interest borrowing and community sources of funding to deliver environmental improvements.	Ongoing	Sutton Council - Finance and Climate Action & Sustainability.	Any new financial approach will require a business case.

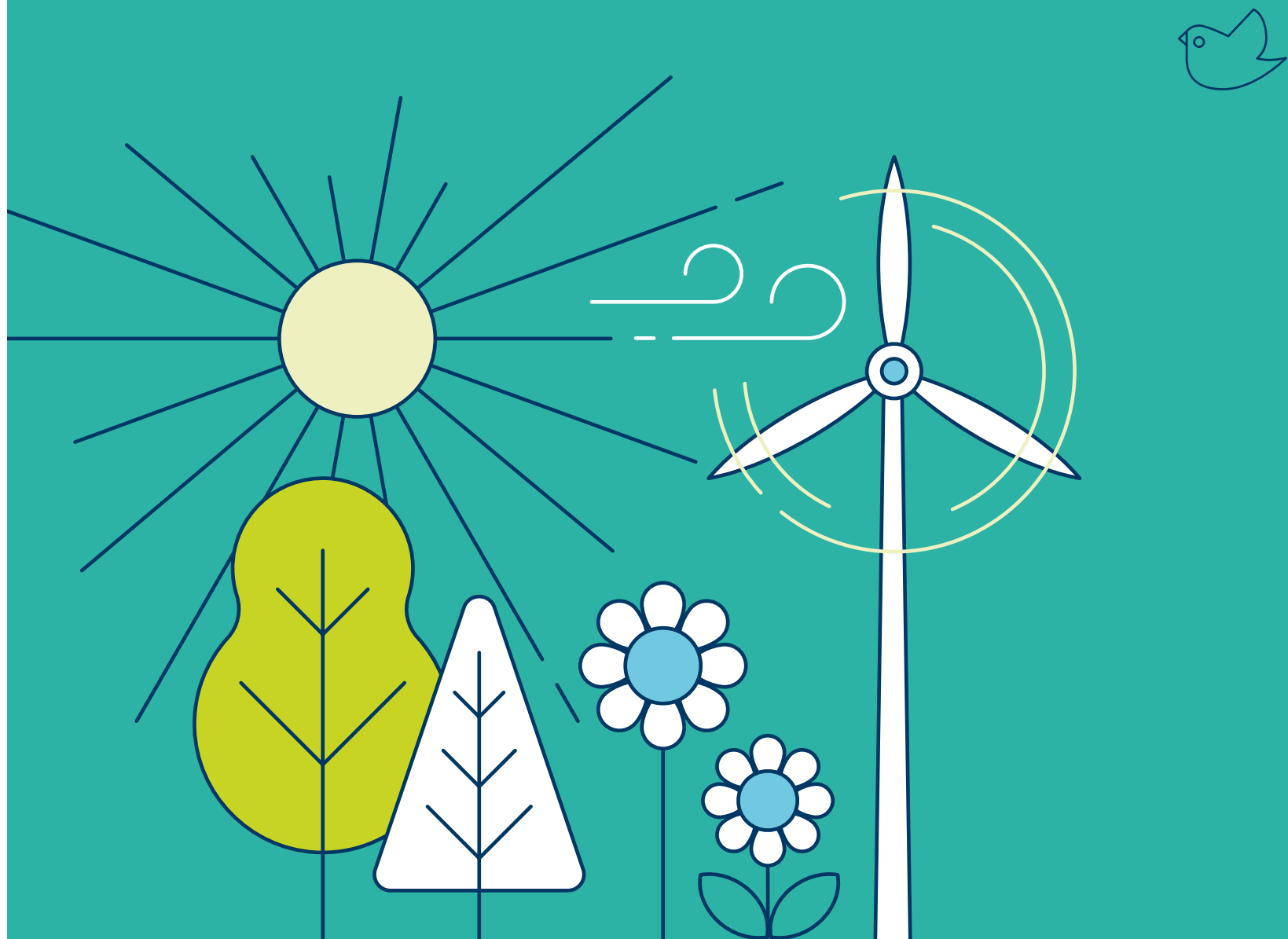
Action		Timescale	Involves	Cost and funding
1	EXISTING: Promote ways staff can reduce their environmental impact at home and in the workplace, including: ▶ Waste and recycling; ▶ Heating and energy use; ▶ Travelling to and during work; ▶ Water use.	Sign up in autumn 2020, then ongoing.	Sutton Council - Communications, Asset Management, Energy Management, Facilities Management and Climate Action & Sustainability. Mitie, SES Water, Smart Energy GB.	Carbon Trust recommends spending the equivalent of 1% of energy bills on awareness campaigns, with an estimated energy saving of half the cost of the campaign. This would be approx. £30k. This cannot be achieved with existing budgets.
2	UPDATED: Create a network of environment champions within the Council.	2021/22 (delayed due to COVID-19).	Sutton Council - Climate Action & Sustainability.	Met from existing budgets.
3	NEW: Investigate the feasibility of a salary sacrifice scheme to support staff take up of electric vehicles (or other renewable fuels).	2022/21	Sutton Council - Sustainable Transport, Climate Action & Sustainability, HR.	Feasibility costs to be met from existing budgets. If this proves viable additional funding will need to be secured.

PART 3: SUPPORTING ACTION BY OTHERS

Action		How will this help?	Cost and funding
1	EXISTING: Offer an audit and advice service for small businesses, charities and community organisations with premises, helping them access grants and information on environmental improvements.	Helps reduce carbon emissions in the commercial / industrial sector.	<p>The Ashden / Friends of the Earth toolkit proposes a part-time member of staff and to target 20 businesses each making savings of 21 tonnes of CO₂ each year.</p> <p>This requires an extra member of staff to progress this and the availability of external funding to signpost to.</p>
2	EXISTING: Offer an audit and advice service for schools, helping them access grants and information on environmental improvements.	Helps reduce carbon emissions in the education sector.	<p>The Ashden / Friends of the Earth toolkit proposes a part-time member of staff and to target a total reduction in CO₂ of 1,875 tonnes.</p> <p>This requires an extra member of staff to progress this. Schools can access interest free loans through Salix finance.</p>
3	EXISTING: Support community energy schemes in the borough: promote opportunities for residents, businesses and community groups to generate their own energy locally e.g. solar panels, ground source or air source heat pumps, as well as options to reduce energy use or improve carbon emissions, for example through boiler replacement schemes.	Increases the amount of energy in the borough generated by renewable energy.	This requires an extra member of staff to work with communities to get projects off the ground. External funding is currently available through the Mayor of London.
4	EXISTING: Develop a pipeline of suitable energy efficiency, renewable energy and fuel poverty projects that can be implemented using the carbon offset fund. ⁴	Increases the amount of energy in the borough generated by renewable energy and reduces emissions from building energy use.	Feasibility studies will require funding. May be possible to demonstrate return on investment. Carbon offset fund can fund installations.
5	EXISTING: Work with local businesses and skills and training providers to develop the local supply chain needed to achieve building retrofit goals and support a local green economy. Support local people to access the training needed for these jobs.	Supports a local green economy, helps the borough achieve its ambitions for low carbon buildings, reducing emissions.	Met from existing budgets.
6	UPDATED: Continue to support schools to establish the feasibility of introducing cost-effective food waste recycling, for example through a joint procurement.	Increases food recycling from schools.	It should be cheaper for schools to recycle food waste than dispose of it as rubbish.

4. [Policy 31 \(Carbon and Energy\) of the Local Plan \(page 104\)](#) requires major residential developments to achieve zero carbon standards, by offsetting at least 35 per cent of emissions on site and offsetting the remainder to 100 per cent by a section 106 contribution to the Council's carbon offset fund to deliver carbon offsetting measures elsewhere in the borough.

Action	How will this help?	Cost and funding
7 EXISTING: Extend the Sutton Decentralised Energy Network to deliver district heating schemes to new developments across the borough, based on feasibility studies and then business cases.	We need to transition the borough to a low carbon energy mix, and district heating networks are part of this.	Grant funding / funding bids are options here, as well as investment / income models.
8 UPDATED: Work with Community Action Sutton on plans for the future of Hill House that incorporate the environment both in building fabric and as a sustainability exemplar, as well as opportunities for the community e.g. community fridge (with SHP), food growing and environmental awareness raising.	Provides an exemplary sustainability space in a listed building and supports community ownership and activity on environmental sustainability.	Zero carbon build standards will come at additional cost and will require external funding bids. There may be some revenue costs associated with running activities which may be supported through existing council tenders / budgets or that external funding bids could support.
9 EXISTING: Retain borough Sustainable Food City status through the Sutton Food Forum, delivering the action plan that: ▶ makes healthy and sustainable food a defining characteristic of the borough; ▶ maps where in the borough local food is grown and sold and identifies the support (if any) these initiatives need; ▶ addresses food poverty including holiday hunger. This may link to action on fuel poverty; ▶ improves Sutton's score on the Good Food for London report.	Agriculture and food waste are a significant contributor to global emissions. Sustainable food also addresses multiple public health, environmental and inequalities areas: ▶ Locally grown food; ▶ Cooking skills; ▶ Reducing food waste; ▶ Cooking on a budget; ▶ Healthy food; ▶ School holiday hunger.	Met from existing budgets.
10 UPDATED: Continue to promote funding opportunities to relevant groups for environment improvements e.g. businesses, charities, groups that work with vulnerable residents, schools etc.	Everyone needs to take action on climate change and funding can help make this happen.	Time on promotion can be met from existing resources. Funding is made available from a range of sources, for public sector, private sector, individuals and communities.
11 EXISTING: Encourage e-bike use by working with bike shops to promote offers on e-bikes, promote to residents, and encourage workplaces to introduce electric cargo bikes as part of services/ goods delivery.	Reduction in vehicle emissions and cleaner air.	Time on promotion can be met from existing resources. Electric cargo bikes cost approximately £1,500.
12 EXISTING: Continue to offer support to businesses and schools in travel planning.	Reduction in vehicle emissions and cleaner air.	Met from existing resources.
13 UPDATED: Build upon previous successes, securing funding to install electric vehicle charging points in residential roads and at key places across the borough where this supports a switch from more polluting vehicles, with an aim to install 100 points a year.	Reduction in vehicle emissions and cleaner air.	Government and TfL funded programme of electric vehicle charging points.



This page is intentionally left blank